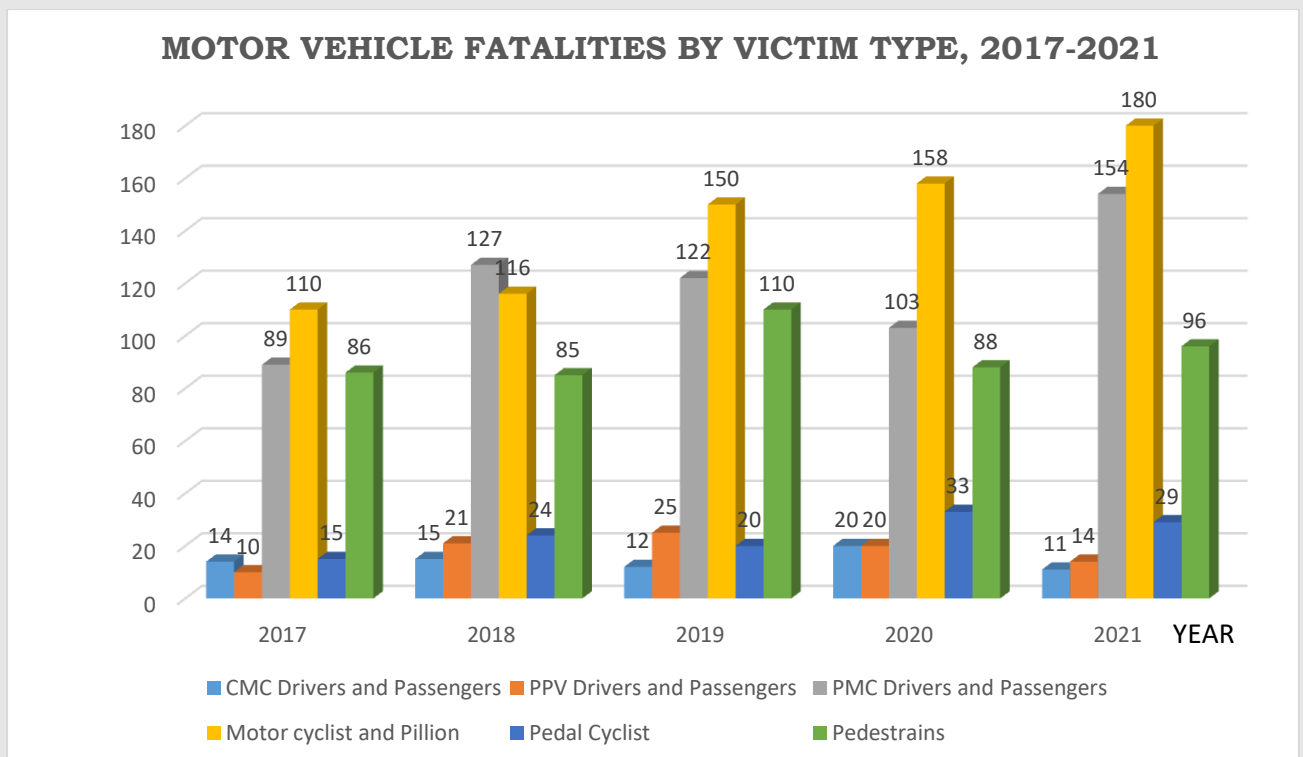


MOTOR VEHICLE FATALITIES BY VICTIM TYPE 2017-2021

Definition: Motor vehicle fatalities refer to an incident which involves any Motor Vehicle collision along any public thoroughfare that leads to loss of life, whether the road is public or private and the crash involved at least one vehicle. The accident must have been reported to the police, and at the time of the crash, a motor vehicle must have been in motion

Fatalities due to motor vehicle collision on our roads is of much concern to all, not only because of the hurt and anguish experienced by families of the victims but also because an enormous burden is borne by the State in these circumstances. Costs related to trauma, property damage along the roadway, loss of human capital and the financial burden or loss of income experienced by families. So these numbers must be examined and reported on to provide context and guidance to all road users.



The figure above shows the casualties of motor vehicle fatalities for the period 2017-2021 by victim type. It is observed that for the said period Motorcyclist and pillion has consistently been the most affected group followed by Private Motor Car drivers and passenger and then Pedestrians. It should be noted that the trajectory of motor cyclist and pillion fatalities is an upward one moving from a low of 110 in 2017 to a high of 180 in 2021.

Drivers and passengers of Private Motor Cars (PMC) ranked second on the list of casualties. The trend here seems to be cyclic with alternate highs and lows. The highest reported casualty for this group was 154 individuals in 2021 and the lowest recorded was 89 in 2017. Pedestrians too suffered greatly with the highest recorded deaths being 110 in 2019 and the lowest being 85 in 2018. This category along with the other groups is somewhat cyclic with alternate highs and lows. Commercial Motor Carrier (CMC) Drivers and passengers, Public Passenger Vehicles (PPV) drivers and passengers and pedal cyclist causality numbers remain relatively low compared with the three previously named groups.